



www.fleet.vdo.com

Welcome to VDO Fleet

The ideal solution for your fleet

VDO

Table of contents

| | |
|--|----|
| Welcome to VDO Fleet | 3 |
| VDO Fleet cloud solution | 4 |
| VDO Fleet Remote Download: driver and tachograph data – automatically on time and in compliance with the law | 6 |
| VDO Fleet Tachograph Management | 7 |
| VDO Fleet Maps – for fleets on the move | 12 |
| VDO Fleet interfaces – everyone can benefit from VDO Fleet | 14 |

Who is VDO Fleet suitable for?

- For companies that need comprehensive archiving and evaluation of tachograph data.
- For companies that want to save time, effort and resources.
- For business owners who want to digitalize their company.
- For fleets of any size that want to automate routine tasks.
- For companies looking for the best partner for holistic compliance.

Welcome to VDO Fleet

Successfully managing a commercial vehicle fleet is a special challenge. Many legal regulations at national and European level must be observed. Failure to comply with these standards can result in fines, some of which can be substantial. In the worst-case scenario, there is a risk of losing the community license. On top of that, there are the business, organizational and personnel-related tasks that managers of all kinds of fleets have to deal with.

With VDO Fleet, we provide fleet managers with a cloud-based solution to safely comply with legal requirements, effectively manage staff, efficiently manage the fleet and seize new opportunities. VDO Fleet helps you perform your daily tasks and routines in a time-saving and secure way.

- **Comply with legally required handling of data.**

With VDO Fleet you ensure timely downloading and archiving of digital tachograph and driver card data. Never worry about missing another deadline.

- **Fulfill information obligations.**

Documents informing drivers of their infringements or attestation documents needed for international journeys are just a click away.

- **Always keep an eye on the infringement situation.**

With VDO Fleet you have a complete overview of your fleet's infringement situation. This means that you can avoid exceeding critical ERRU limit values, which could lead to the revocation of your transport license. For a holistic solution, we have also integrated other national working time regulations in addition to the EU driving time regulations in order to detect driving time infringements. You can identify the causes of violations and train your staff in a preventive and targeted way.

- **Take care of financial risks.**

Potential fines and security payments can be a considerable financial risk for transport and logistics companies. With VDO Fleet, you can quantify the financial risks at any time and take the right measures to mitigate them.

- **Manage international transports in compliance with the law.**

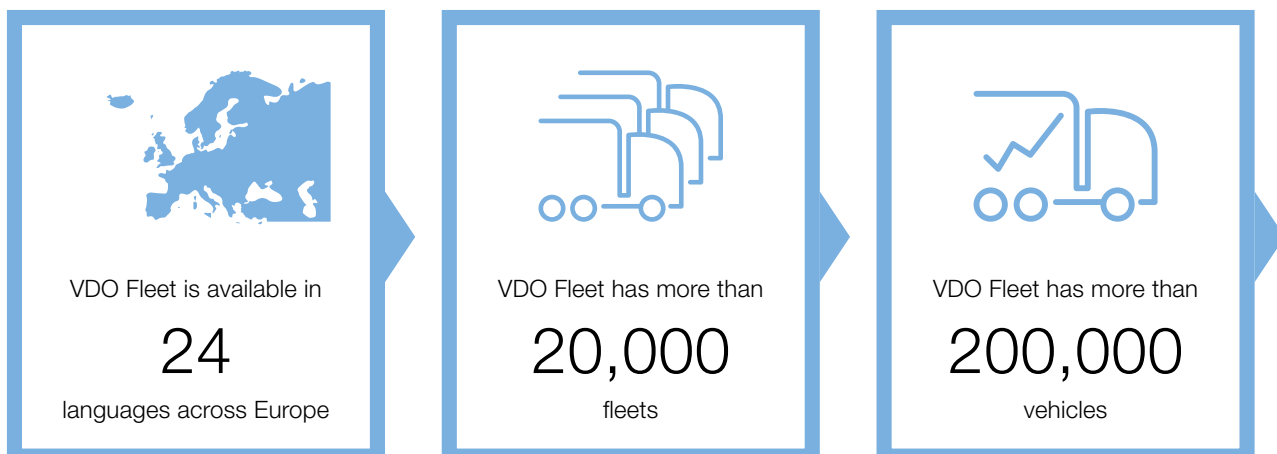
If your fleet is used for cross-border traffic, then it is subject to the special requirements of the new EU Mobility Package I. VDO Fleet helps you to take these often complex regulations into account in your day-to-day work and to integrate them into your processes very easily.

As the manufacturer of the best-selling DTCO® series digital tachographs, we know what matters. Working closely with our customers, we continuously develop and improve services that are designed to make your working life as easy as possible.

VDO Fleet cloud service

VDO Fleet is a so-called SaaS (Software as a Service) application. With VDO Fleet, you get a cloud solution, rather than a piece of software that you then have to install on your computers. This modern model offers many advantages over traditional software:

- **Ready to use now –**
after registration you can start using VDO Fleet immediately.
- **No IT knowledge required –**
you don't need on-site IT staff for setup and maintenance.
- **Accessible anytime and from anywhere –**
your fleet information is immediately available 24/7 and on any computer. To use VDO Fleet, all you need is Internet access and your login data.
- **Fully customizable –**
customize and interpret the data according to your needs, add or remove additional users with individual roles and option to use the system in 24 different languages.
- **Your own web hosting –**
we provide web space for you throughout the EU ourselves. That means you can benefit from guaranteed, comprehensive service from a single source.



- **Data security guaranteed –**

thanks to SSL, TLS, HTTP(S) and database encryption, automated backups and ISO 27001 certification, you can be sure your data is stored according to the latest security standards.

- **Data protection ensured –**

GDPR-compliant data storage in the cloud relieves you of the obligation to comply with data protection regulations. For example, we automatically delete personal data for you after the retention period has expired.

- **Always up to date –**

you always work with the latest version. New functions are provided automatically. You do not have to buy or install updates.

VDO Fleet is a uniform fleet management solution, especially for mixed fleets that use different commercial vehicle brands or tachograph manufacturers. Information from analog tachographs can also be processed in VDO Fleet.

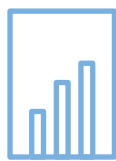
Digitalize your fleet today with VDO Fleet and make it fit for the future. For more safety and more efficiency.



VDO Fleet has more than

400,000

drivers

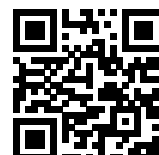


VDO Fleet is integrated with more than

50

partners

Find
out
more!



VDO Fleet Remote Download: automatically download driver and tachograph data on time and in full compliance with the law

With the help of Remote Download, you can ensure that memory and driver card data are automatically downloaded within legally set deadlines. That means you no longer have to deal with manually managing, implementing and checking download schedules. You can also achieve better results by feeding the system with up-to-date data from your fleet's tachographs. The shorter the interval of data downloads, the more precise the information VDO Fleet provides you with. Like with the fleet's infringement situation or the VDO fines catalog, for example.

Back up data on the move.

Remote DL 4G is hardware coupled with the digital tachograph, which can easily be installed in the vehicle. An integrated LTE communication module sends vehicle and driver card data from the tachograph at set times. This ensures that the information is automatically transferred directly to your VDO Fleet system – regardless of where your vehicles are currently parked. Neither you nor your driving personnel have to manually save or transfer data after returning home. This helps you to comply with legal requirements, to keep your data up to date and, above all, to save a lot of time.



VDO Fleet Tachograph Management

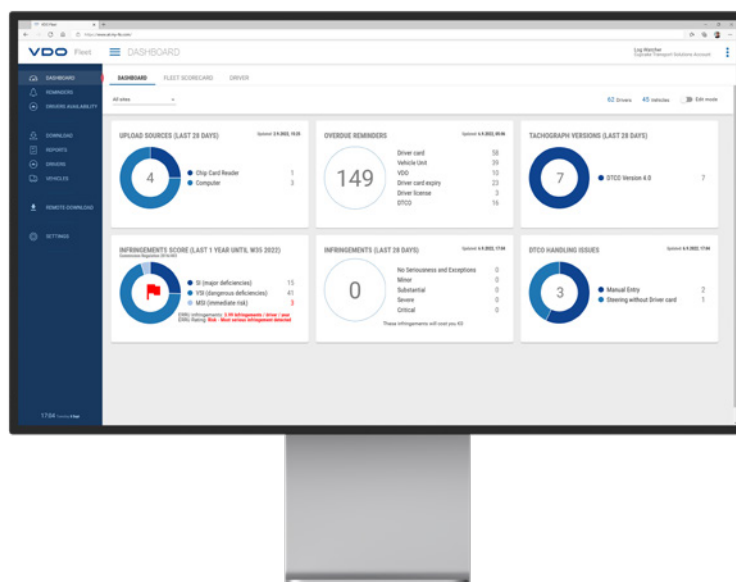
VDO Fleet Tachograph Management offers a range of important services that help you to fully comply with legal requirements. But VDO Fleet Tachograph Management can also make all other fleet management tasks a great deal easier for you or even take them off your hands completely.

The most important VDO Fleet Tachograph Management advantages at a glance:

- Data archiving always in accordance with current legislation
- Increased efficiency in driver instruction and fleet management
- Drivers' working times always in view
- Overview of impending fines
- Important appointments can be coordinated centrally
- Optimal vehicle and driver planning based on live and downloaded data.
- Individual driver training thanks to an overview of possible threats to the community license (ERRU) and scorecards

Archiving of and providing your data in accordance with current legislation.

As a fleet manager, you are obliged to regularly read and archive the data from the tachograph. VDO Fleet Tachograph Management ensures that you fulfill your legal archiving obligations and can provide all data at the push of a button in the event of an inspection. VDO Fleet Tachograph Management automatically archives driver card and vehicle data. The data secured in this way is retained for a long time in accordance with legal time frames and deleted once the deadline has expired. That means no more manual lists and cumbersome data storage for you.



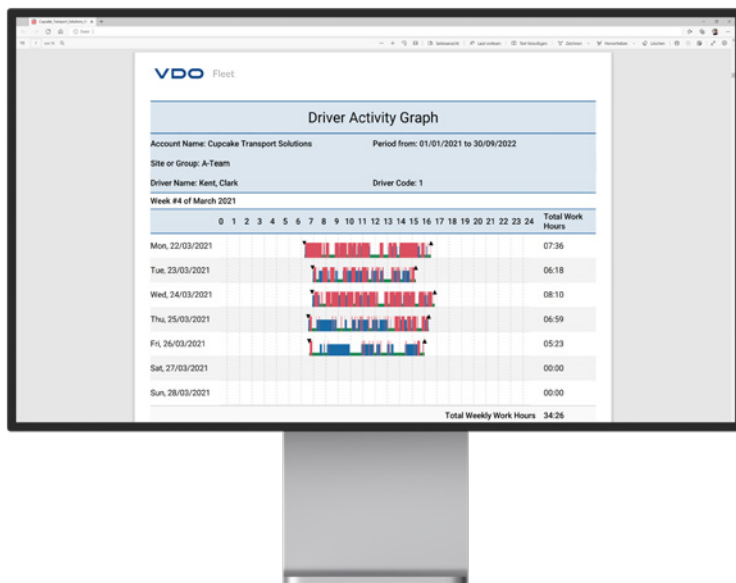


Increase the efficiency of your entire fleet.

You're obliged to instruct your freight and passenger transport drivers once a year about infringements and to keep them updated regularly. With VDO Fleet Tachograph Management, you can prepare driver instruction digitally and document it accordingly. VDO Fleet Tachograph Management takes into account European driving and rest times as well as national working time regulation. On this basis we calculate scorecards to show you at a glance where the most infringements occur and what drivers need to be trained first. This means you have access to complete evaluations of the infringement situation and can arrange for individual reports to be sent to your drivers on a weekly or monthly basis.

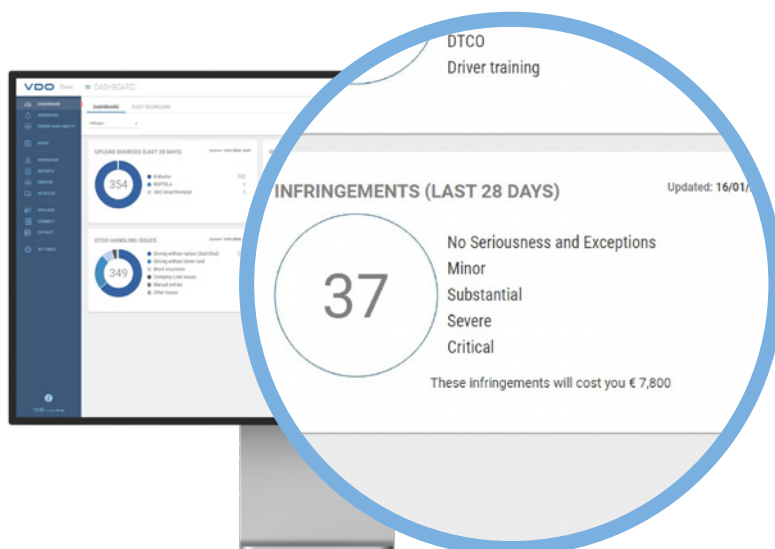
Take working hours into account.

When scheduling, you need to know when your drivers will be available and how much driving time they have remaining. VDO Fleet Tachograph Management supports you not only by showing current driving and rest times, but also considers the different European working time regulations, such as night work requirements. You no longer need different calculation programs as you have everything in one system. Automatically generated and sent letters give your drivers updates about remaining working times, which saves you from having to do this manually. So you're always on the safe side and save time.



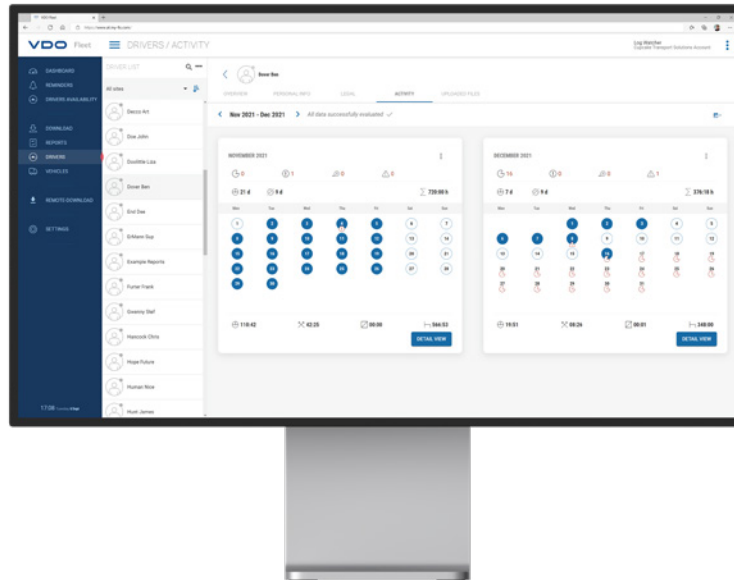
Manage fine risks.

As a fleet manager, you should always know where you stand in terms of financial risk to the company from infringements. The VDO fine catalog service combines data from the intelligent tachograph with the type of violation and country-specific fine amounts. This helps you determine the current fine risk after each data download from the tachograph. It's no longer necessary to manually assign possible infringements to national regulations. That gives you an overview of the fine threat to the entire fleet and allows you to estimate risks for individual drivers.



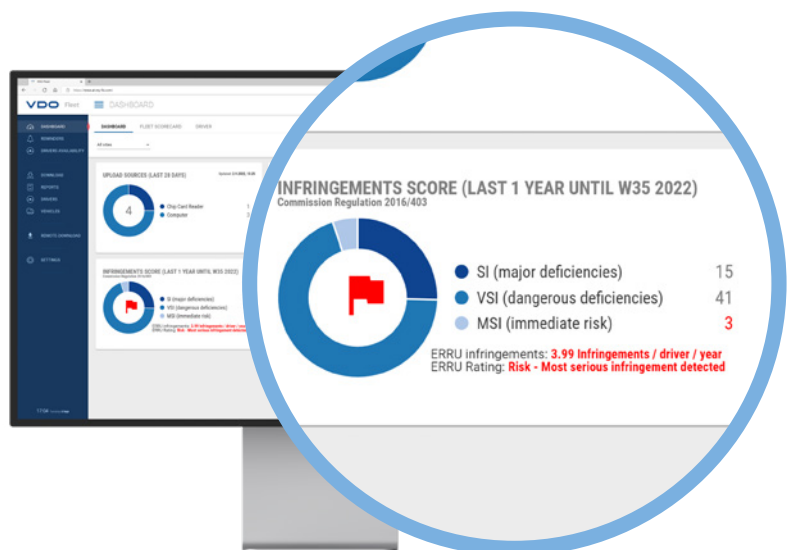
Coordinate and stick to important appointments.

With VDO Fleet Tachograph Management, you can efficiently plan maintenance appointments or combine a service with tachograph calibration. The program reminds you of vehicle and driver data download due dates, driver and company card renewals or driver's license checks. This helps you to avoid unnecessary downtime and ensures you never miss an appointment again.



Monitor the ERRU infringement situation.

VDO Fleet Scorecard (ERRU)* gives you an overview of all the infringements for the fleet and drivers at the touch of a button. You can immediately see whether limits are about to be exceeded and whether planning errors or the misconduct of individual drivers are the cause of the infringements. You no longer have to make individual calculations for each driver but can react in a timely and targeted way. This reduces the number of infringements and keeps the company safe.



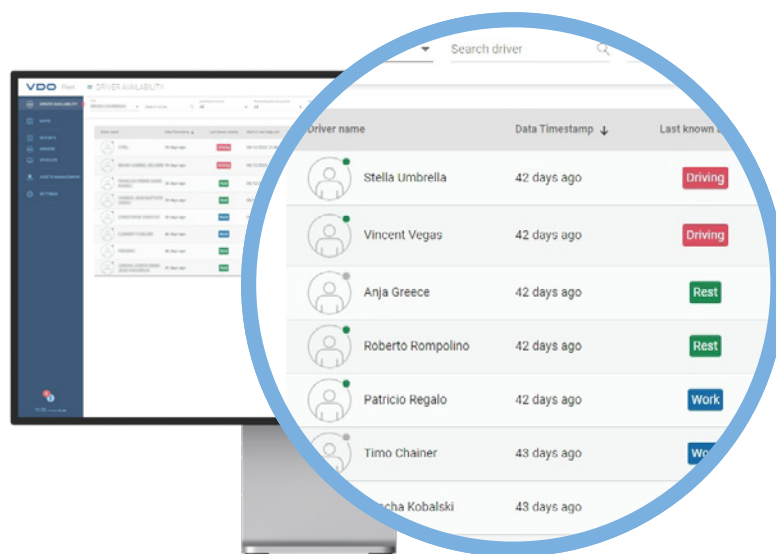
*ERRU (European Register of Road Transport Undertakings) is an electronic system that enables member states to exchange information on transport companies that are active on the roads. ERRU connects the national electronic registers of transport companies in various member states, enabling authorities to exchange information contained in their respective databases.

Comply with regulations even in international traffic.

As a fleet manager, you face additional challenges under the new EU mobility regulations for international transport. With VDO Fleet Tachograph Management, you no longer have to create spreadsheets and manually identify which drivers are particularly likely to drive internationally. Infringements such as forgetting to enter the country code are immediately and automatically displayed.

Plan vehicles and drivers.

With VDO Fleet Driver Availability, you can immediately see which vehicles and drivers are available, as well as current driving times, rest times and remaining driving times. This allows you to schedule deliveries and payloads faster and more effectively. You avoid empty runs and prevent infringements.



Avoid unnecessary costs and be aware of possible fines.

With VDO Fleet Tachograph Management, you can easily obtain the information that helps you to recognize potential violations in good time and avoid unnecessary costs. Thanks to a variety of useful reports, driver availability and the user-friendly dashboard, you know your potential fines, avoid fines for incorrect driver scheduling and are reminded of important deadlines. This saves you valuable time and money.

With VDO Fleet Tachograph Management, you lay the foundation for the digitalization of your fleet. No matter what size it is, getting started with VDO Fleet Tachograph Management will make your fleet safer, your management more efficient and your business more profitable.

VDO Fleet Maps – for fleets on the move

VDO Fleet Maps supports you in dispatching and controlling your vehicles when they are on the road. Read here what other benefits the program offers you.

Be more exact.

VDO Fleet Maps shows you where your vehicles are and where they're going. Using this service means you can react faster and take on additional loads or change routes when you have to. On top of showing you where your vehicles are, the module will tell you about remaining driving times. This ensures that you always know which driver is ready for action and which vehicle is closest.

Deliver more precisely.

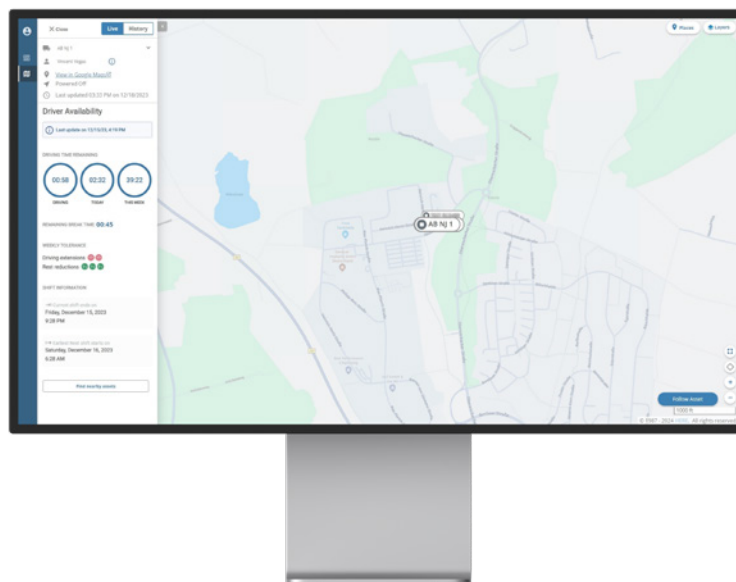
Together with easy-to-install remote download hardware, VDO Fleet Maps allows you to access vehicle position data. It's almost as if you're in the cab yourself when you can track routes in close to real time. This means you can tell your customers when the vehicles are going to arrive, without having to bother your driver.

Make routes even better.

With Remote DL 4G hardware, the route driven on any given day can be called up in the VDO Fleet Maps trip history. By linking memory card data from the DTCO® with the vehicle route, you have all the information you need to plan even better routes.

Increase efficiency and reduce costs.

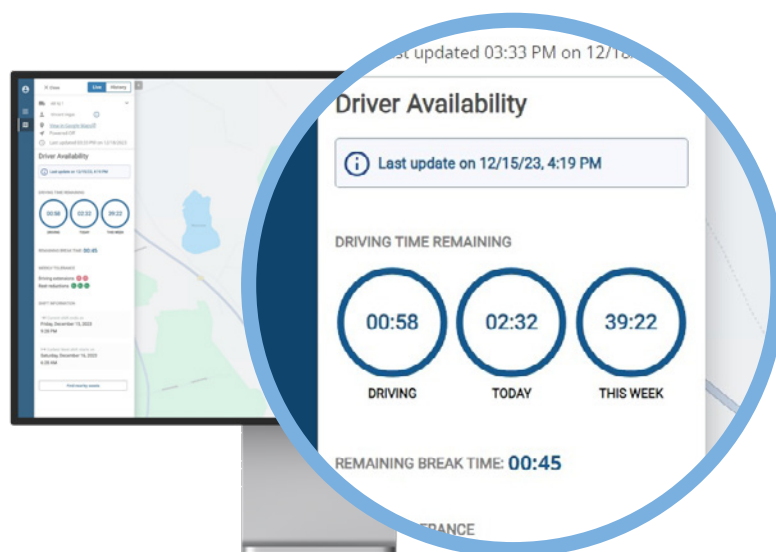
At the same time, our service provides an overview of engine idling to avoid unnecessary fuel consumption, as well as an optimal basis for billing the driver's kilometers driven when delivering goods, based on the route history. Protect the environment and your budget.





Determine driving time.

Remaining driving and rest times are constantly transmitted to you, the fleet manager, thanks to an extended VDO Counter function. This means that open times can be dynamically adjusted to the duration of the route and you get an exact overview of the current time remaining for your drivers.



VDO Fleet Maps is the perfect addition to VDO Fleet Tachograph Management, providing detailed knowledge and allowing tours to be planned more precisely as well as shortening waiting times at the ramp and idle times.

VDO Fleet interfaces – everyone can benefit from VDO Fleet

Most commercial vehicle manufacturers already have their own fleet management software. However good these programs may be, when fleets are made up of vehicles from various manufacturers, it makes coordination a challenge. VDO Fleet was designed as a comprehensive, uniform solution for all brands. That means VDO Fleet offers you additional interfaces to merge data from your vehicles and evaluate them together.



Merge data sets from mixed fleets.

Using the VDO Fleet Connect interface, you can easily and securely transfer your data from the digital tachographs of your mixed fleet, from your server or from your cloud to VDO Fleet. To enable you to use all the archiving and evaluation functions of VDO Fleet and receive the best possible support from us, we have already integrated many FMS systems to receive their tachograph download files. VDO Fleet Connect is available as a REST and SOAP-based programming interface.

Develop individual data models for professionals.

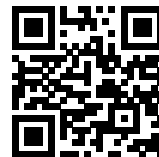
With VDO Fleet Extract, we offer the option of integrating specific data sets from the VDO Fleet Cloud into your own software solution, such as billing systems or payroll accounting. Other partners can also authorize their third-party service providers to view and process corresponding data. This allows you to create an even more innovative telematics services infrastructure.

Let us advise you!

VDO Fleet is as individual as your fleet. We will be happy to show you how VDO Fleet can help you comply with all legal requirements safely and conveniently. As specialists for tachograph data, we can advise you on how to make your fleet fit for the future with VDO Fleet web services. As secure as necessary, as efficient as possible.

You can find our specialist dealers here:
www.vdo-partner.com/vdo/index/eng

Find
out
more!



Continental Automotive Technologies GmbH

Sodener Str. 9

65824 Schwalbach

Germany

www.fleet.vdo.com

tachograph@vdo.com

VDO – A trademark of the Continental Corporation

The information provided in this brochure contains only general descriptions or performance characteristics, which do not always apply as described in the specific case or which may change as a result of further development of the product. This information is merely a technical description of the product. This information is not meant or intended to be a special guarantee for a particular quality or particular durability. An obligation to provide the respective characteristics shall only exist if expressly agreed in the terms of contract. We reserve the right to make changes in availability as well as technical changes without prior notice.

Continental Automotive Technologies GmbH | English © 2024
Printed in Germany

