



# Readme

### Imprint

The information contained in this documentation is subject to change without prior notice. In doing so, Continental Automotive GmbH do not enter into any obligation. The description is based on the information available at the time this documentation was printed. We reserve the right to change technical details in the description, information and illustrations in this operating manual.

Continental Automotive GmbH shall accept no liability for program errors and for incorrect information in the documentation or for any consequential damages arising from this.

Windows is a registered trademark of the Microsoft® Corporation.  
Microsoft Internet Explorer® is a product of the Microsoft® Corporation.  
MSSQL-Server® and MSDE® are registered trade marks of the Microsoft® Corporation.  
.NET Framework® is a registered trademark of the Microsoft® Corporation.  
Crystal Reports® is a registered trademark of Business Objects SA.  
Acrobat® is a registered trademark of Adobe Systems Incorporated.  
In the following, the above trademarks are partly used without indicating their respective owners.

© by Continental Automotive GmbH. All rights reserved.

### ***Responsible for the content***

Continental Automotive GmbH  
Postfach 16 40  
78006 Villingen-Schwenningen  
Germany  
Internet <http://www.dtco.vdo.com>  
E-mail [tachograph@ continental-corporation.com](mailto:tachograph@continental-corporation.com)

VDO – A Trademark of the Continental Corporation

### TIS-Office Patch 3.1.9



The installation of this TIS-Office Patch is only permitted if Version 3.1 has already been installed.

Older TIS-Office versions (e.g.: 2.7.6, 3.0) must first be updated to Version 3.1 before the TIS-Office Patch can be installed. The Patch itself checks the existing TIS-Office version number.

After unpacking, the "TIS-Office Patch 3.1.9.exe" must be called on the Server as well as the individual clients respectively with regard to network installation. In case of stand-alone installation, both parts are automatically installed.

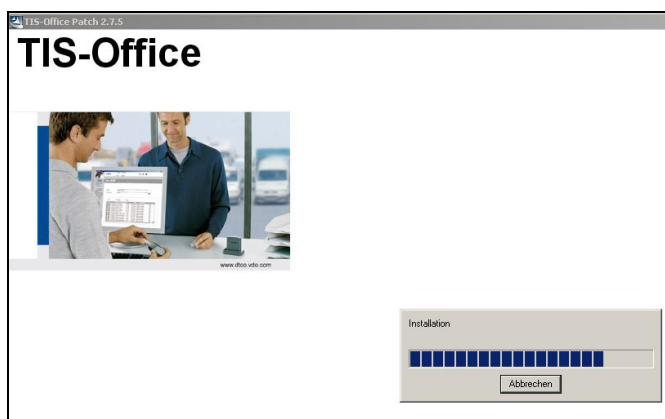


**Note:**

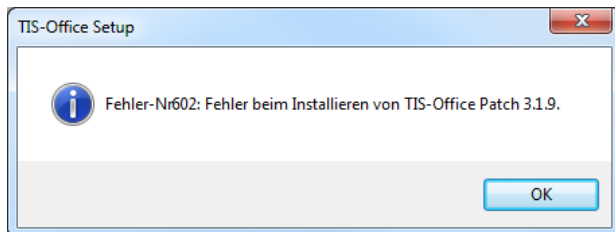
All TIS-Office companies (databases) existing at the time of the installation will be converted to Version 3.1.9 by means of the Patch installation.

### TIS-Office Patch 3.1.9 – Description of Procedure

TIS-Office Patch is started by selecting "**TIS-OfficePatch\_3.1.9.exe**"



Example: Error No. 602

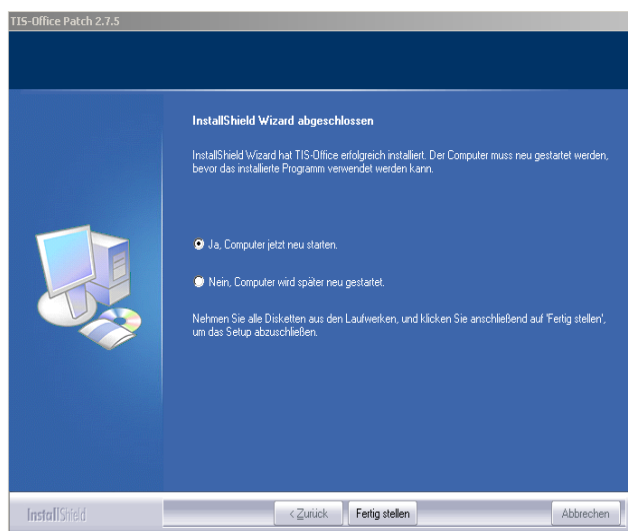


Confirm with **OK**

Eliminate the error cause and  
run TIS-Office Patch 3.1.9 again.

**The following errors can occur when carrying out the Patch:**

- **Error No. 602**  
TIS-Office 3.1 is still active and you are trying to install Patch  
- Terminate TIS-Office 3.1 application
- **Error No. 601**  
non-existent TIS-Office 3.1 installation.  
- install TIS-Office 3.1  
- Database update
- **All other error numbers** are SQL server errors such as "17". This error signalsizes that the SQL server had a problem.  
- The SQL server application must be terminated and restarted.



TIS-Office Patch 3.1.9 installed successfully  
Confirm with **OK**

**After the successful TIS-Office Patch 3.1.9 installation follows the output of the log file in the directory: C:\Program Files\VDO\TIS-Office\Logs\ 3.1.9 Patch.log**

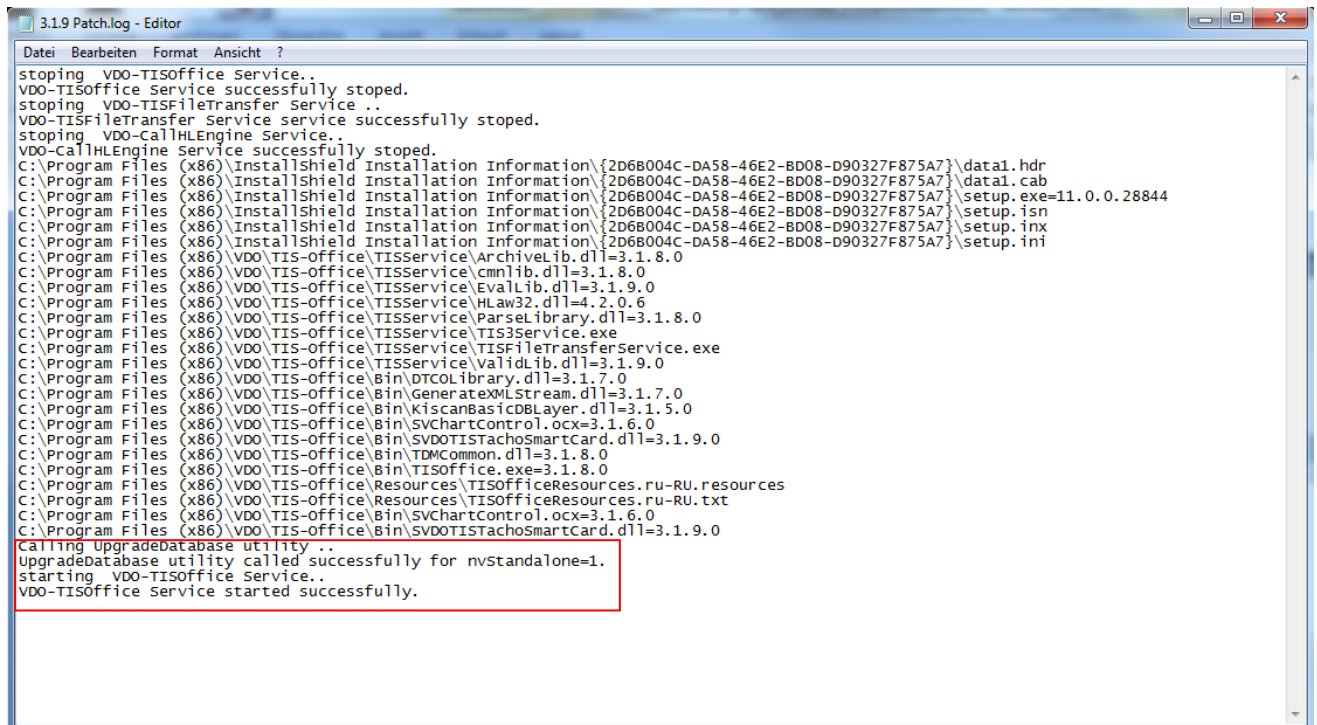
The Patch installation process is stored therein – it is clearly discernible whether or not the TIS-Office Patch 3.1.9 was installed successfully.

At the end of the log file the messages:

- "UpgradeDatabase utility called successfully"
- "VDO-TISOffice Service started successfully"

appears.

## TIS-Office Patch 3.1.9



```
3.1.9 Patch.log - Editor
Datei Bearbeiten Format Ansicht ?

stopping VDO-TISOffice Service..
VDO-TISOffice Service successfully stopped.
stopping VDO-TISFileTransfer Service ..
VDO-TISFileTransfer Service service successfully stopped.
stopping VDO-CallHLEngine Service..
VDO-CallHLEngine Service successfully stopped.
C:\Program Files (x86)\InstallShield Installation Information\{2D68004C-DA58-46E2-BD08-D90327F875A7}\data1.hdr
C:\Program Files (x86)\InstallShield Installation Information\{2D68004C-DA58-46E2-BD08-D90327F875A7}\data1.cab
C:\Program Files (x86)\InstallShield Installation Information\{2D68004C-DA58-46E2-BD08-D90327F875A7}\setup.exe=11.0.0.28844
C:\Program Files (x86)\InstallShield Installation Information\{2D68004C-DA58-46E2-BD08-D90327F875A7}\setup.isn
C:\Program Files (x86)\InstallShield Installation Information\{2D68004C-DA58-46E2-BD08-D90327F875A7}\setup.inx
C:\Program Files (x86)\InstallShield Installation Information\{2D68004C-DA58-46E2-BD08-D90327F875A7}\setup.ini
C:\Program Files (x86)\VDO\TIS-Office\TISService\ArchiveLib.dll=3.1.8.0
C:\Program Files (x86)\VDO\TIS-Office\TISService\cmnlib.dll=3.1.8.0
C:\Program Files (x86)\VDO\TIS-Office\TISService\EvalLib.dll=3.1.9.0
C:\Program Files (x86)\VDO\TIS-Office\TISService\HLaw32.dll=4.2.0.6
C:\Program Files (x86)\VDO\TIS-Office\TISService\ParseLibrary.dll=3.1.8.0
C:\Program Files (x86)\VDO\TIS-Office\TISService\TIS3Service.exe
C:\Program Files (x86)\VDO\TIS-Office\TISService\TISFileTransferService.exe
C:\Program Files (x86)\VDO\TIS-Office\TISService\ValidLib.dll=3.1.9.0
C:\Program Files (x86)\VDO\TIS-Office\Bin\DTCOLibrary.dll=3.1.7.0
C:\Program Files (x86)\VDO\TIS-Office\Bin\GenerateXMLStream.dll=3.1.7.0
C:\Program Files (x86)\VDO\TIS-Office\Bin\KiscanBasicDBLayer.dll=3.1.5.0
C:\Program Files (x86)\VDO\TIS-Office\Bin\SVChartControl.ocx=3.1.6.0
C:\Program Files (x86)\VDO\TIS-Office\Bin\SVDOTISTachoSmartCard.dll=3.1.9.0
C:\Program Files (x86)\VDO\TIS-Office\Bin\TDMCommon.dll=3.1.8.0
C:\Program Files (x86)\VDO\TIS-Office\Bin\TISOffice.exe=3.1.8.0
C:\Program Files (x86)\VDO\TIS-Office\Resources\TISOfficeResources.ru-RU.resources
C:\Program Files (x86)\VDO\TIS-Office\Resources\TISOfficeResources.ru-RU.txt
C:\Program Files (x86)\VDO\TIS-Office\Bin\SVChartControl.ocx=3.1.6.0
C:\Program Files (x86)\VDO\TIS-Office\Bin\SVDOTISTachoSmartCard.dll=3.1.9.0
Calling UpgradeDatabase utility ..
UpgradeDatabase utility called successfully for nvstandalone=1.
Starting VDO-TISOffice Service..
VDO-TISOffice Service started successfully.
```